

Update: May 2019

We hope you like our new look National Water Sports Centre (NWSC) Initiative update.

In these newsletter updates you will find out about the progress of works to improve the safety and amenity of the NWSC.

Constructing a multi-use path

Works are well and truly underway to install a multi-use concrete path under Wells Road and Mornington Peninsula freeway. The path will improve access to the NWSC from Bonbeach and Patterson Lakes

Weather permitting, the path is expected to be completed by mid-June.



Figure 1: Constructing switchback at the western end of the path.

Restoring the main rowing shed

Full repairs and maintenance to the rowing shed are nearing completion, with works expected to be finalised before the end of May 2019. Works have included structural strengthening works, replacing the front awning, new skylights and external lighting. Significant works have taken place to upgrade the toilets, including painting, new panels and fittings where required.

Sealing the access road & main car park

Works to seal the access road from Riverend Road to the internal boom gate and compound gates. Works will commence shortly. The project will include adding

speed humps and sealing the main carpark, with line marking for general parking and event parking.



Figure 2: Freshly painted ladies change rooms in the rowing shed with new fittings, scrubbed tiles and repaired water leaks.

Designing a multi-use community building

During consultation with the community in 2018 on the future vision for the area, there was strong consensus that all buildings (except for the main rowing shed, the NWSC Ski Club and the new storage facility) should be demolished and, where necessary, replaced.

A new multi-use building is being designed, which will eventually replace the old demountable buildings. This new community building will provide a space for clubs and groups to meet, store equipment and host events.

Our contracted architect, FPPV Architecture, has met twice with stakeholders to listen to their requirements for the design. A floorplan design has now been finalised through these conversations (see diagram overleaf).

Engineering drawings are in the process of being drafted, which will take into account the physical limitations of the site (i.e. that the levee bank must not carry the weight of the building). A 'materials and finishes schedule' will be circulated to stakeholders in about 2 weeks for feedback.

Repairing the finishing tower

An inspection of the tower has shown that immediate repairs are needed to keep it secure and safe. We will soon be contracting out works, including to replace the level 1 floor, three broken windows, wooden doors, and clean the inside of the building.

Upgrading the public address system

The public address system is very old and has had many temporary patch ups in its 30-year life span. We are currently seeking a quote to replace the system with one that is better suited to modern day events.

General site beautification

Discussions with Parks Victoria have identified the need to replace old fencing and bollards. Stakeholders will be consulted about this work before a fencing plan is drafted.



Figure 3: Some of the key repair items in the finish tower.

Further Information

For more information about the National Water Sports Centre Initiative, please contact John Downs at john.downs@delwp.vic.gov.au.

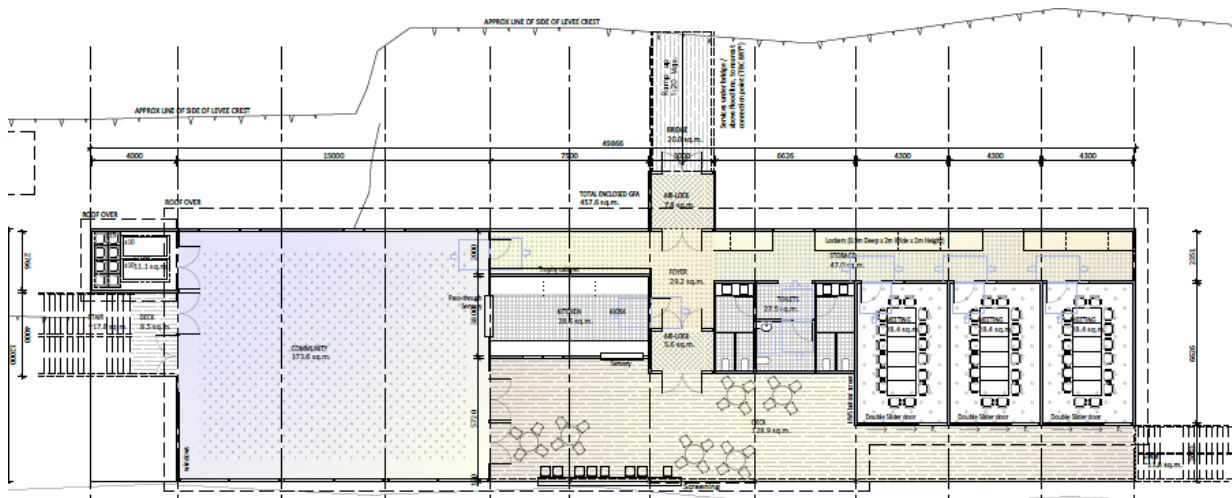


Figure 4: Final Community building floorplan, 15m long to easily accommodate 100 seated guests, with floor to ceiling windows on the riverside and the western end.

© DELWP 2019



This work is licensed under a Creative Commons Attribution 4.0 International licence. You are free to re-use the work under that licence, on the condition that you credit the State of Victoria as author. The licence does not apply to any images, photographs or branding, including the Victorian Coat of Arms, the Victorian Government logo and the DELWP logo. This publication may be of assistance to you but the State of Victoria and its employees do not guarantee that the publication is without flaw of any kind or is wholly appropriate for your particular purposes and therefore disclaims all liability for any error, loss or other consequence which may arise from you relying on any information in this publication.

Accessibility

If you would like to receive this publication in an alternative format, please telephone the DELWP Customer Service Centre on 136186, email customer.service@delwp.vic.gov.au, or via the National Relay Service on 133 677 www.relayservice.com.au. This document is also available on the internet at www.delwp.vic.gov.au.