

# National Water Sports Centre Initiative 2018/2019

Update: 7 June 2019



## Multi-use path nears completion

Works to construct the path are almost finished, with concrete laying nearing completion. Handrails will soon be added to the western end and ground cover planted around the switchback (see below). All work is expected to be completed by the end of June.



Figure 1: Constructing switchback at the western end of the path.

Figure 2: Laying concrete under Wells Road.



## Restoration of rowing shed finalised

All major works are now complete on the rowing shed. CFA is currently making the building fire compliant with

appropriate signage, replacing a few hoses, and updating reels and cabinets as required.

## Contract awarded: sealing access road & main carpark

Maw Civil has been awarded this contract and planning has been finalised and a site office installed. Just in time for the winter rains!

Luckily, rain will not prevent preliminary works, so crews will soon be starting on works to prepare the site for asphaltting and installing drainage.

Works will be conducted in two main phases to make sure users can continue to access the site as much as possible throughout construction. In the first phase, the main carpark and area behind the rowing shed will be sealed.

While the first phase of works is underway, access to the back of the shed and the boat ramp may be limited for a few days. Our contractor will be working with the community to help with access as much as possible.

The second phase of works will involve constructing the access road. While this phase is underway, area users will be able to access the site through the unmade carparks.

## Repairs starting soon on finishing tower

New doors have been ordered, and minor works are due to begin on 17 June. Works include replacing the level 2 floor, replacing four access doors, replacing the round window, sealing the level 3 floor and a general clean of each level.

## Final approvals being sought: multi use community building

We are currently seeking final planning approvals and putting finishing touches on documentation for the new multi-use building. Construction costs will be estimated once this process is complete.

Cladding has been chosen for severe coastal environments and consists of matt finish colourbond with vertical ironbark cladding on the undercover walls.

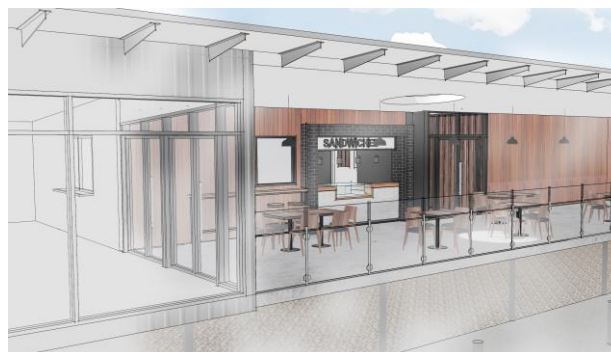


Figure 3 and 4:  
Impression of the proposed community building at the National Water Sports Centre.  
(Source: FPPV Architecture)



## Feedback received for public address system

Thank you to those who provided feedback about the requirements of the new public address system. Feedback will be incorporated where possible. This project will be completed around the end of June.

## Replacing the freeway fencing

The old cyclone fence on the western end of the property will be replaced to limit access to the freeway. This small project will greatly improve the safety of the site.

## Upgrading non-powered boating water access points

We are continuing to investigate the cost of replacing the smaller pontoon used by the radio-controlled yacht club.

## Site security

We are investigating the best options for improving onsite security with a view of having a system up and running in the new financial year.

© The State of Victoria Department of Environment, Land, Water and Planning 2019



This work is licensed under a Creative Commons Attribution 4.0 International licence. You are free to re-use the work under that licence, on the condition that you credit the State of Victoria as author. The licence does not apply to any images, photographs or branding, including the Victorian Coat of Arms, the Victorian Government logo and the Department of Environment, Land, Water and Planning (DELWP) logo. To view a copy of this licence, visit <http://creativecommons.org/licenses/by/4.0/>

Printed by <Insert Name of printer - Suburb>

ISBN XXX-X-XXXXX-XXX-X (print)

### Disclaimer

This publication may be of assistance to you but the State of Victoria and its employees do not guarantee that the publication is without flaw of any kind or is wholly appropriate for your particular purposes and therefore disclaims all liability for any error, loss or other consequence which may arise from you relying on any information in this publication.

## Accessibility

If you would like to receive this publication in an alternative format, please telephone the DELWP Customer Service Centre on 136186, email [customer.service@delwp.vic.gov.au](mailto:customer.service@delwp.vic.gov.au) (or insert relevant address), or via the National Relay Service on 133 677 [www.relayservice.com.au](http://www.relayservice.com.au). This document is also available on the internet at [www.delwp.vic.gov.au](http://www.delwp.vic.gov.au).